

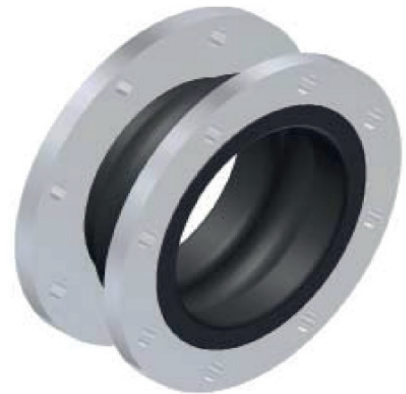
RUBBER COMPENSATOR

Type 53 yellow NBR

Type 53 is a low corrugated bellow compensator with good sound insulating characteristics. It is characterized by a very high expansion capability, especially in the angular areal.

Design:

Low corrugated rubber bellow with reinforcing inserts and integral sealing bead (therefore self-sealing without additional gaskets) for accomodating the swivel flanges. The flanges are provided with through holes.



Bellow Colour Code	Core (inner)	Reinforcing material	Cover (outer)	Permissible data (bar - ° c)	Operating
Yellow	NBR	Nyloncord	CR	7 - 90	

Suitable for vacuum up to 0.8 bar abs., without supporting ring.

Suitable for vacuum up to 0 bar abs., with supporting ring.

DN 20 - DN 50 suitable for vacuum without supporting ring.

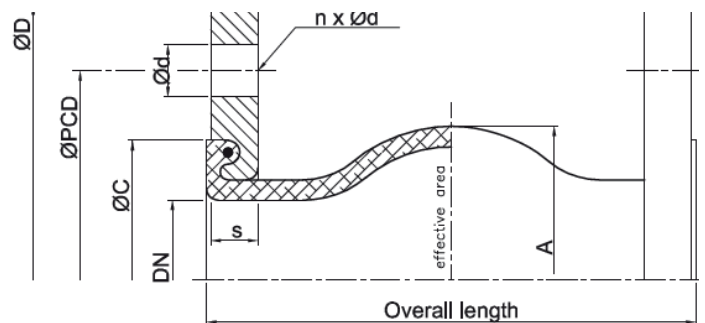
Burst pressure DN 20 - DN 600 → 48 bar.

Flanges: (Design A)

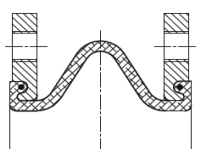
Swivel flanges both sides (Design A) with integral rubber profile, so that additional gaskets are not required (self-sealing).

The flanges are drilled acc. to ASMEB 16,5-cl.150lbs.

Flange Material: Standard S 235 JRG2 (RSt 37-2) zinc plated and yellow passivated.

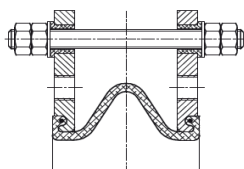


Design A



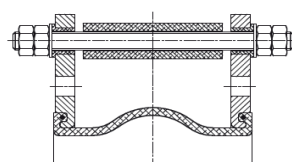
DN 20 - 600

Design B



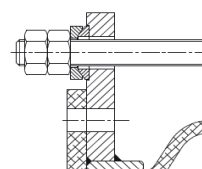
DN 20 - 300

Design C



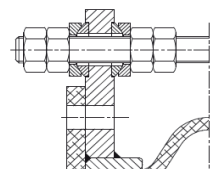
DN 20 - 300

Design E



DN 350 - 600

Design M



DN 350 - 600

Application:

For oils, fats, resistance to weather aging and ozon, not suitable for fuel.

Sizes above DN 200, applicable only for Non-dangerous liquid according to PED 2014/68/EU

Designs:

Design A: both sides with loose flanges, untied.

Design B and E: with tie rod construction up to DN 300
with rubber bushes (B), from DN 350
with spherical washers and bolt discs

Design C yellow with tie rod construction and thrust limitation up to DN 300 ©, from DN 350
Connecting rod layed inside and outside in spherical washers and bolt discs.

Supporting ring stainless steel in spiral from design up to DN 300 and
from DN 350 full ring design.

DN	Bellow			Flange ASA 150 lbs						Movement absorption			
	BL mm	ØA mm	Eff. A. mm ²	Ø D mm	Ø PCD mm	Ø d mm	n mm	s mm	Ø C mm	Axial +	Axial -	Lat. +/-	Lat. +-
25	130	81	1700	108	79,2	15,7	4	14	65	30	30	30	30
32	130	81	1700	117	89	15,7	4	15	65	30	30	30	30
40	130	86	1800	127	98,4	15,7	4	15	74	30	30	30	35
50	130	96	3200	152,4	120,6	19	4	16	86	30	30	30	30
65	130	111	5300	177,8	139,7	19	4	16	105	30	30	30	30
80	130	122	8500	190,5	152,4	19	4	18	118	30	30	30	30
100	130	142	12800	228,6	190,5	19	8	18	137	30	30	30	20
125	130	168	18700	254	215,9	22,2	8	18	166	30	30	30	20
150	130	192	25900	279,4	241,3	22,2	8	18	192	30	30	30	20
200	130	252	41000	342,9	298,4	22,2	8	20	252	30	30	30	12
250	130	302	59600	406,4	361,9	25,4	12	20	304	30	30	30	12
300	130	354	82200	482,6	431,8	25,4	12	22	354	30	30	30	12
350	200	420	90700	533,4	476,2	28,6	12	24	412	30	50	30	8
400	200	480	101800	596,9	539,7	28,6	16	25	470	30	50	30	8

BERGEN
SJØKRIGSSKOLEVEIEN 15
5165 LAKSEVÅG
NORWAY

STAVANGER
MOSEIDVEIEN 17
4033 STAVANGER
NORWAY