

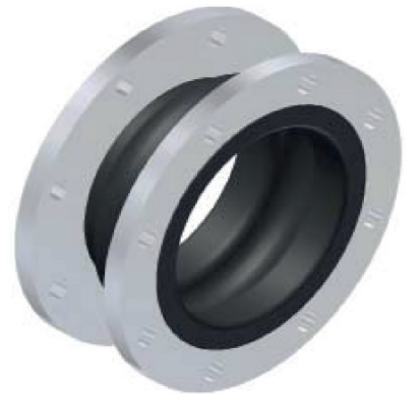
RUBBER COMPENSATOR

Type 53 yellow NBR

Type 53 is a low corrugated bellow compensator with good sound insulating characteristics. It is characterized by a very high expansion capability, especially in the angular areal.

Design:

Low corrugated rubber bellow with reinforcing inserts and integral sealing bead (therefore self-sealing without additional gaskets) for accomodating the swivel flanges. The flanges are provided with through holes.



Bellow Colour Code	Core (inner)	Reinforcing material	Cover (outer)	Permissible data (bar - ° c)	Operating
Yellow	NBR	Nyloncord	CR	6 - 90	

Suitable for vacuum up to 0.8 bar abs., without supporting ring.

Suitable for vacuum up to 0 bar abs., with supporting ring.

DN 20 - DN 50 suitable for vacuum without supporting ring.

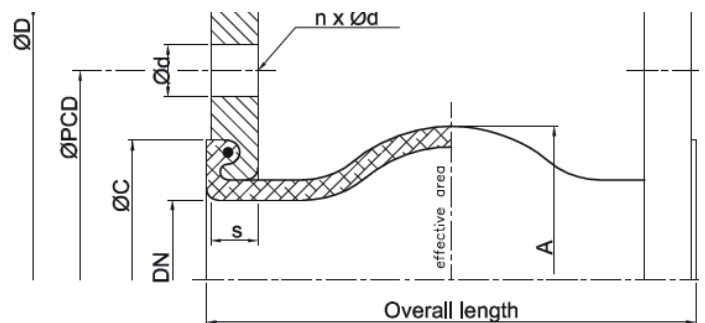
Burst pressure DN 20 - DN 600 → 48 bar.

Flanges: (Design A)

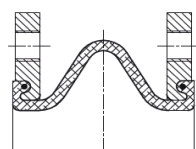
Swivel flanges both sides (Design A) with integral rubber profile, so that additional gaskets are not required (self-sealing).

The flanges are drilled acc. to ASMEB 16,5-cl.150lbs.

Flange Material: Standard S 235 JRG2 (RSt 37-2) zinc plated and yellow passivated.

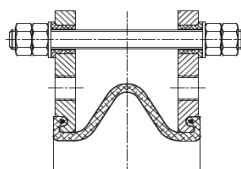


Design A



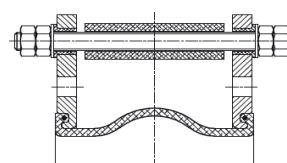
DN 20 - 600

Design B



DN 20 - 300

Design C



DN 20 - 300

Application:

For oils, fats, non-dangerous and stable gas according to PED 2014/68/EU, resistance to weather aging and ozon, not suitable for fuel.

Designs:

- Design A: both sides with loose flanges, untied.
- Design B: with tie rod construction up to DN 300 bolt discs
- Design C yellow with tie rod construction and thrust limitation up to DN 300 ©
Supporting ring stainless steel in spiral from design up to DN 300

DN	Bellow			Flange ASA 150 lbs						Movement absorption			
	BL mm	ØA mm	Eff. A. mm ²	Ø D mm	Ø PCD mm	Ø d mm	n mm	s mm	Ø C mm	Axial +	Axial -	Lat. +/-	Lat. + -
25	130	81	1700	108	79,2	15,7	4	14	65	30	30	30	30
32	130	81	1700	117	89	15,7	4	15	65	30	30	30	30
40	130	86	1800	127	98,4	15,7	4	15	74	30	30	30	35
50	130	96	3200	152,4	120,6	19	4	16	86	30	30	30	30
65	130	111	5300	177,8	139,7	19	4	16	105	30	30	30	30
80	130	122	8500	190,5	152,4	19	4	18	118	30	30	30	30
100	130	142	12800	228,6	190,5	19	8	18	137	30	30	30	20
125	130	168	18700	254	215,9	22,2	8	18	166	30	30	30	20
150	130	192	25900	279,4	241,3	22,2	8	18	192	30	30	30	20

BERGEN	STAVANGER
SJØKRIGSSKOLEVEIEN 15	MOSEIDVEIEN 17
5165 LAKSEVÅG	4033 STAVANGER
NORWAY	NORWAY